

# FOR LEASE

Kokomo Medical Office Park


2302-2350 S. Dixon Road, Kokomo, IN 46902



## PROPERTY HIGHLIGHTS



- For Lease:
  - Suite: 3,095 SF
  - Suite 2312-225: 3,619 SF
  - Max. Contiguous: 6,714 SF
- Easy commute from Community Howard Regional Hospital and Ascension St. Vincent Hospital
- Professionally managed, multi-tenant medical office park
- Convenient, to-your-door parking
- Separate suite entrance for employees and providers
- Competitive tenant improvement allowance available

 **Kokomo Medical Office Park**  
2302-2350 S. Dixon Road  
Kokomo, IN 46902



## CONTACT

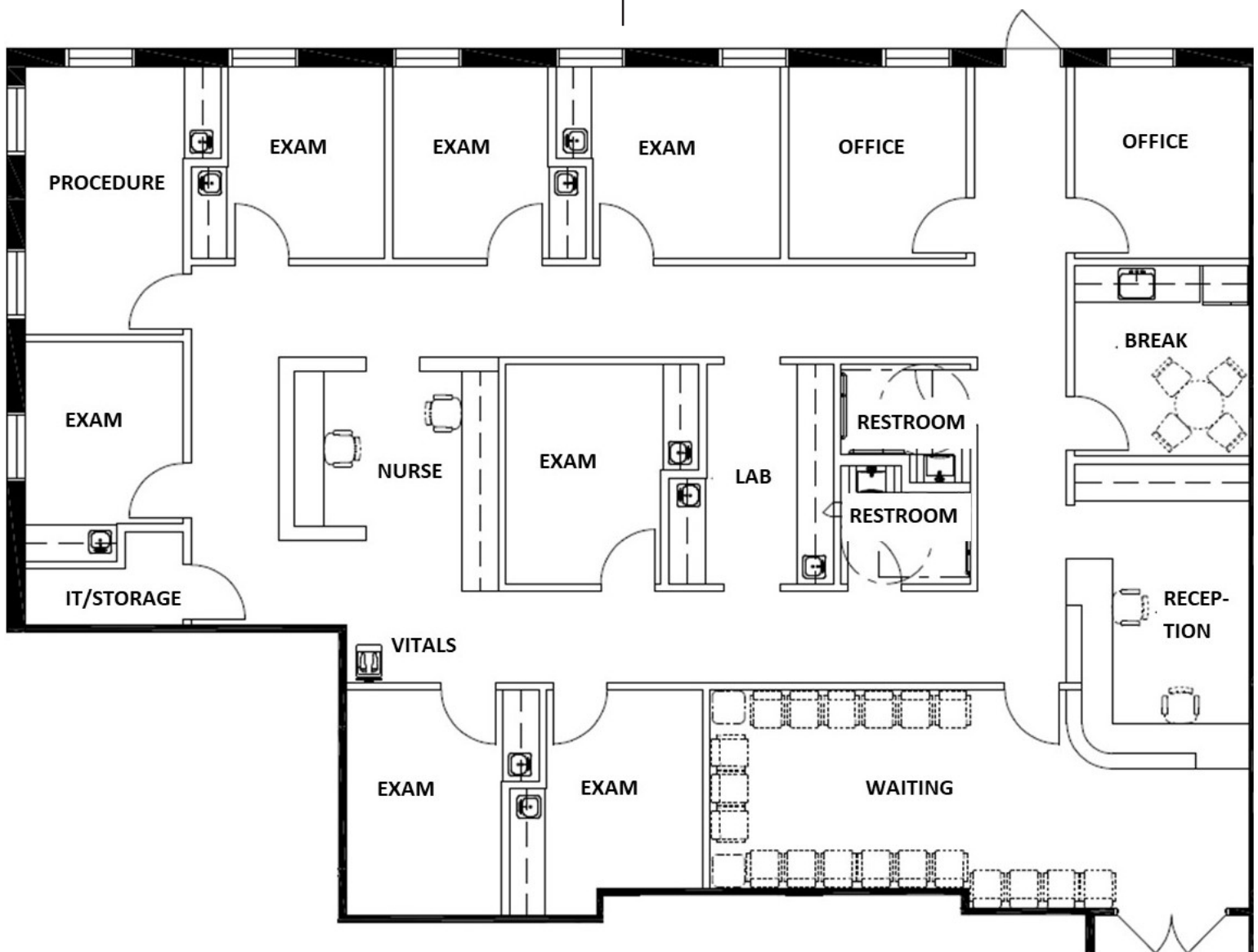
**Charles Yeo, CCIM, CPM**  
SVP, Brokerage  
317.288.9006  
cyeo@cciin.com

Cornerstone Companies, Inc.  
8902 N Meridian Street, Suite 205  
Indianapolis, IN, 46260

# FLOOR PLAN



Suite  
(Example Space Plan)  
3,095 SF



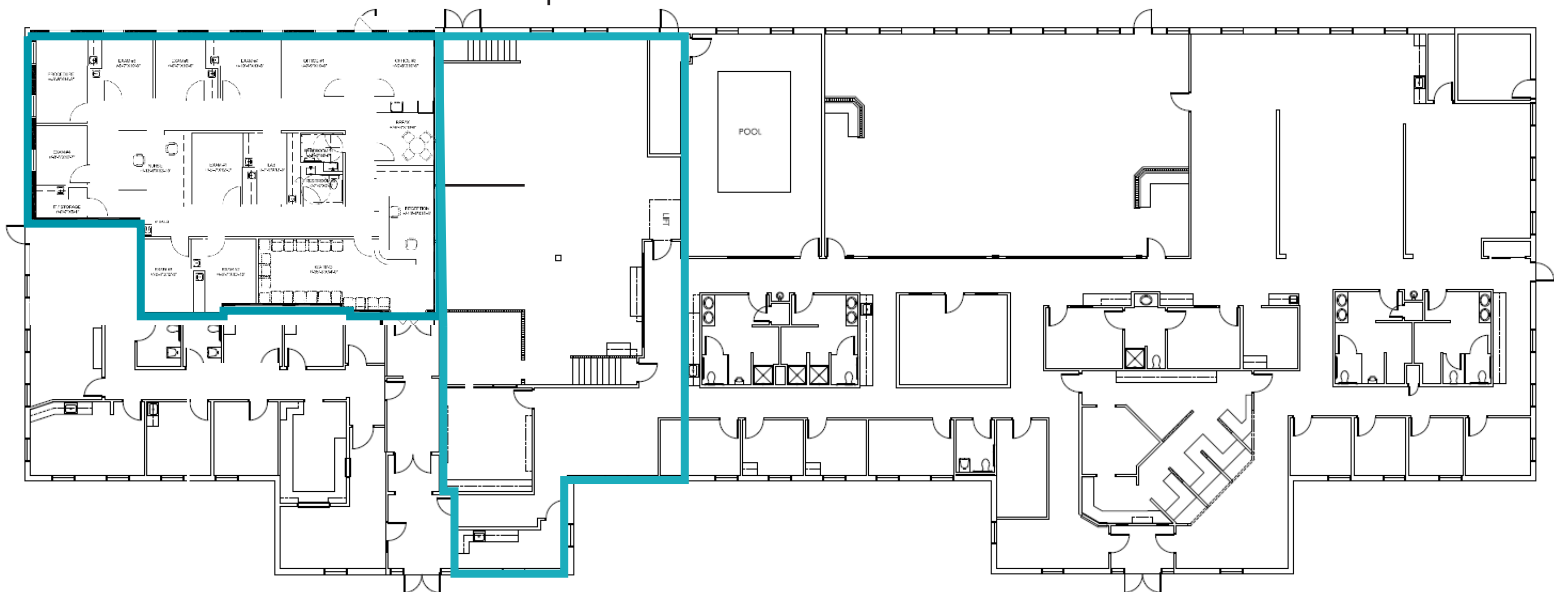
# FLOOR PLAN



MAX. CONTIGUOUS:  
6,714 SF

Suite  
3,095 SF

Suite 2312-225  
3,619 SF



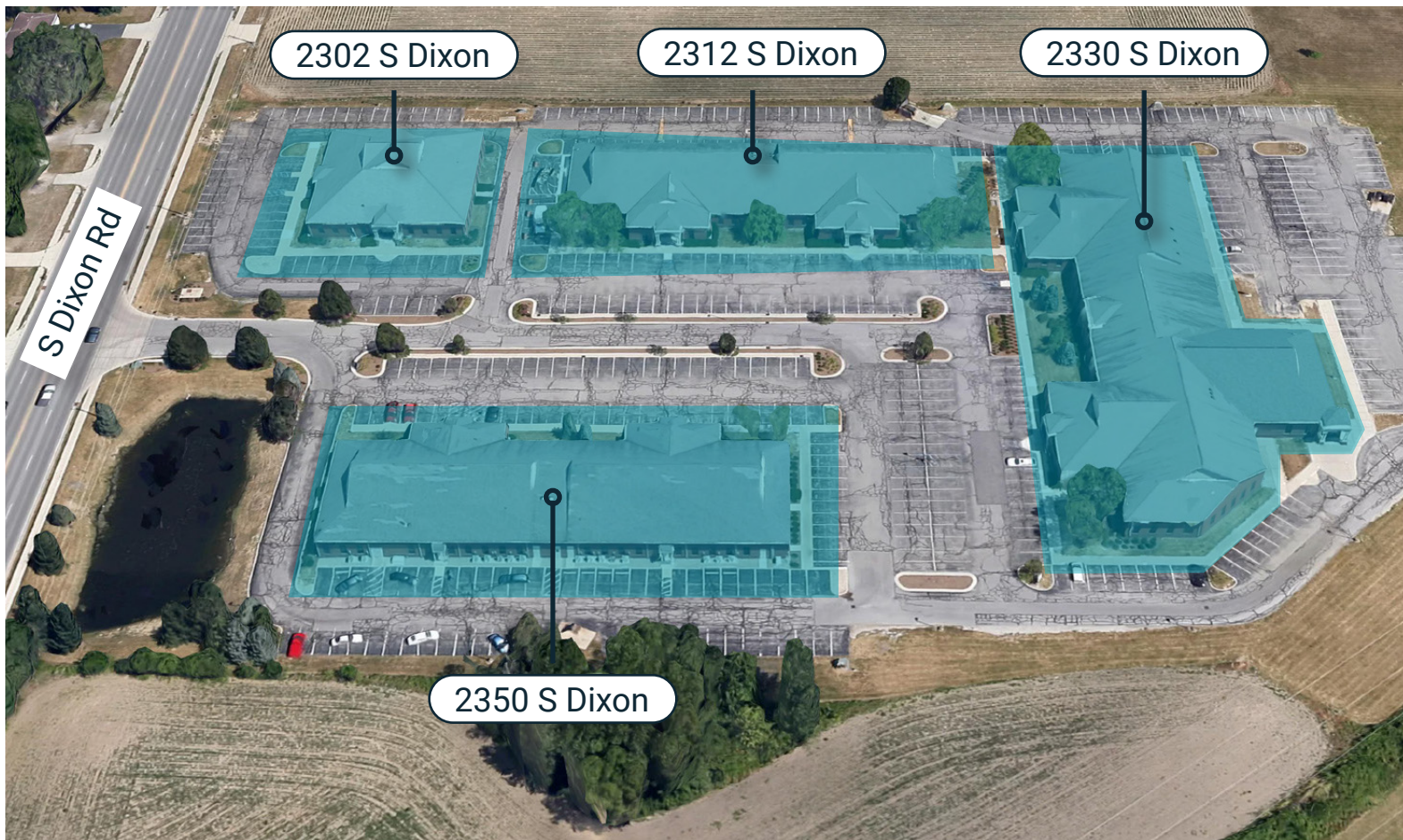
CORNERSTONE



HEALTHCARE  
REALTY

2302-2350 S. Dixon Road  
Kokomo, IN 46902





## TRAFFIC COUNT

14,147 vehicles per day on South Dixon Road

## DEMOGRAPHICS (5 - mile radius)



72,288

Population



40.4

Median Age



30,564

Households



\$70,839

Average  
Household  
Income

KOKOMO MEDICAL  
OFFICE PARK



## CONTACT

Charles Yeo, CCIM, CPM  
SVP, Brokerage  
317.288.9006

[cyeo@ccin.com](mailto:cyeo@ccin.com)



HEALTHCARE  
REALTY



CORNERSTONE

© 2024 Cornerstone Companies, Inc. All rights reserved. Although the information contained herein has been obtained from sources deemed reliable, Owner, Cornerstone Companies, Inc., and/or their representatives, brokers or agents make no representation or warranty as to its accuracy or completeness. Any reliance on this information is solely at your own risk.