



FOR LEASE

PROPERTY HIGHLIGHTS:

- Building Size: 43,257 SF
- Approximately 15,000 RSF of shell space available for lease (can be divided)
- First building in Hancock Regional Health's healthcare-centered, mixed-use campus
- Located at I-70 and Mount Comfort Road
- Less than 16 miles from Hancock Regional Hospital, Community Hospital East, Franciscan Health Hospital, Ascension St. Vincent Fishers Hospital and IU Health Saxony Hospital
- 15-minute drive from East Indianapolis, McCordsville, Greenfield, Lawrence, Irvington and New Palestine
- On-site beverage café

GATEWAY HANCOCK HEALTH
6189 W. JOHN L. MODGLIN DR.
GREENFIELD, IN 46140

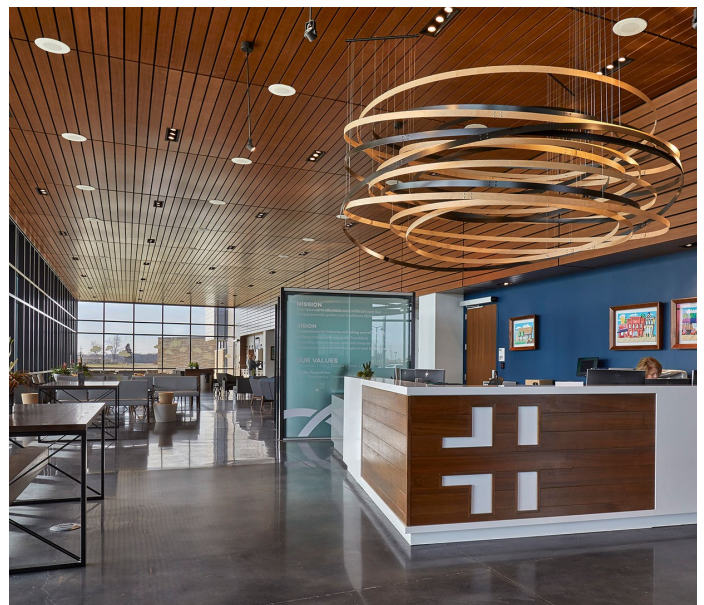
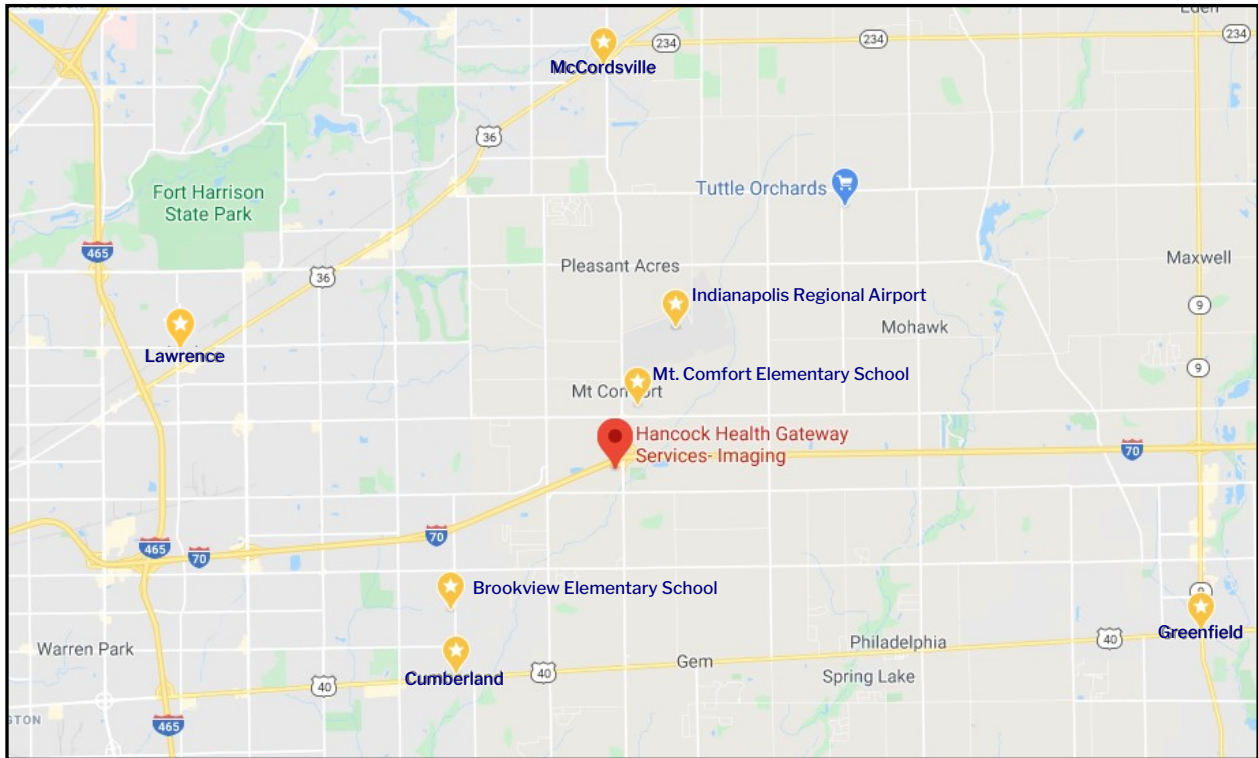
CONTACT:

Ross Goyer
Senior Vice President
317.288.9011
RGoyer@cciin.com

CORNERSTONE COMPANIES, INC.
8902 N. Meridian Street, Suite 205
Indianapolis, IN 46260



LOCATION



CornerstoneCompaniesInc.com

FLOOR PLAN

2ND FLOOR

